

MONTHLY MEMBERSHIP PROGRESS REPORT

LOCATION UGANDA

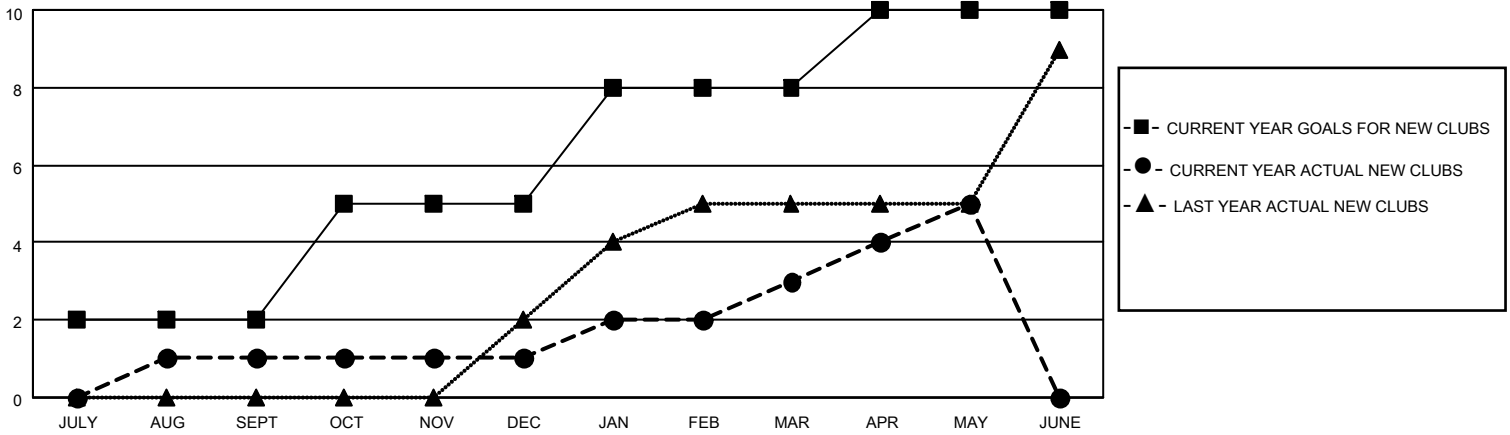
District 411 B

Results as of: 5/31/2023

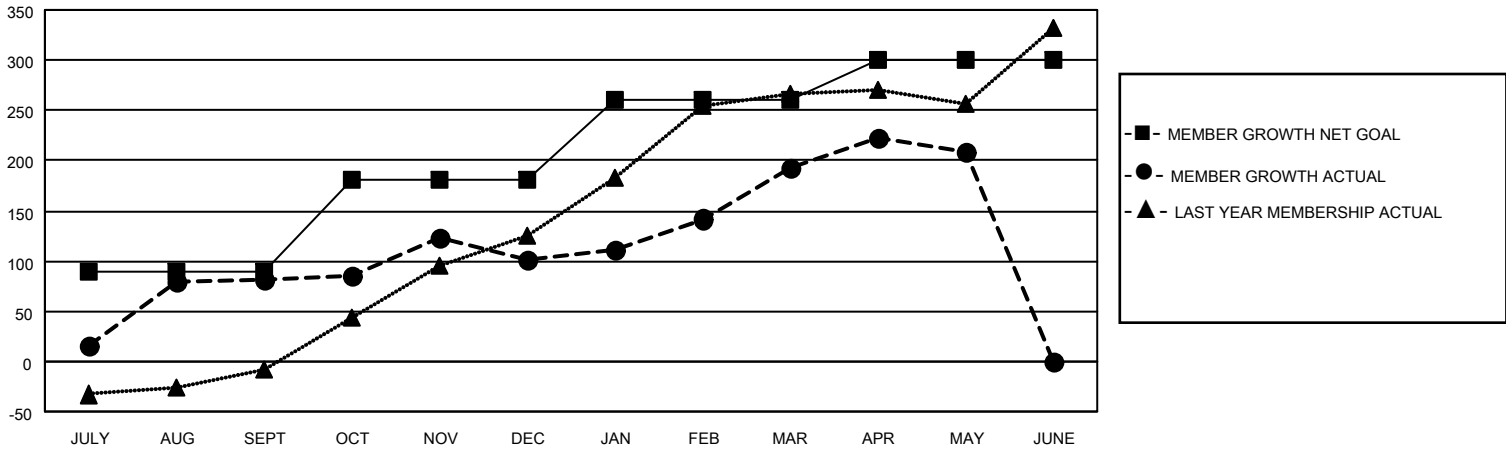
Clubs			
RESULTS FOR 2022-2023			
QUARTER	NEW CLUB GOAL	NEW CLUBS	DROPPED CLUBS
JULY/AUG/SEPT	2	1	0
OCT/NOV/DEC	3	0	2
JAN/FEB/MAR	3	2	2
APR/MAY/JUNE	2	2	0

Members			
RESULTS FOR 2022-2023			
QUARTER	MEMBER GROWTH NET GOAL	MEMBER GROWTH ACTUAL	DROPPED MEMBERS ACTUAL (including transfers)
JULY/AUG/SEPT	90	129	46
OCT/NOV/DEC	90	149	125
JAN/FEB/MAR	80	166	69
APR/MAY/JUNE	40	82	59

GOALS AND ACTUAL NEW CLUBS CUMULATIVE



GOALS AND ACTUAL MEMBERS CUMULATIVE



DROPPED CLUBS: 4

47 CLUBS OF 61 ADDED 1 OR MORE NEW MEMBERS

GENDER DISTRIBUTION

MALE	1,249 (61.17%)
FEMALE	792 (38.79%)
NON BINARY	0 (0.00%)
PREFER NOT TO ANSWER	1 (0.05%)

DROPPED MEMBERS

[CLICK HERE FOR CUMULATIVE MEMBERSHIP DATA](#)

DECEASED	5
CLUB CANCELLED	74
OTHER	220
TOTAL	299

TOTAL FAMILY UNIT MEMBERS 758

FAMILY MEMBERS PAYING HALF DUES 501